



Commercial Lighting



Back Lit LED Panel - SLIM

Features

- TUV, CE, CB, SAA and RoHs certificated.
- IP 40
- Samsung LEDs are our standard choice.
- Bespoke structure
- LED protection design, avoids damage during transportation.
- Aluminum PCB on backplate heat-sink feature to prolong the lifespan of the LEDs.
- UGR 16 up to 114lm/W
- UGR 22 up to 120lm/W
- TPA Fire Rated Available
- Unique slim design to achieve multiple installations (suspending, recessed, surface mounted).

Application

Office, schools, airports, subways, hospitals, shopping malls, retail stores, etc.

Specification

• Accessories

Item No.	Dimension (mm)	Wattage (W)	LED Qty (pcs)	Lumen (lm)	Input Vol. (V)	UGR
P66-3040-BL16	596*596*35	30	48	3420	200-240	<16
P66-3040-BL22	596*596*35	30	48	3600	200-240	<22



- Slim Bespoke Design
 - Multilayer Design
 - Anti Yellowing construction
 - UGR 16 to minimise Glare
 - Slim design for easy installation



Back Lit LED Panel Multi Power

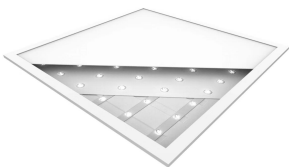
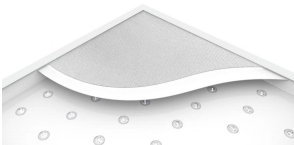
Features

- TUV, CE, CB, SAA and RoHs certificated.
- IP 40
- Bridgelux LEDs are our standard choice.
- Bespoke structure
- LED protection design, avoids damage during transportation.
- Aluminum PCB on backplate heat-sink feature to prolong the lifespan of the LEDs.
- UGR 19 up to 118lm/W
- UGR 22 up to 150lm/W
- TPA Fire Rated Available
- Unique driver with multi power switching, 12W~40W & 16W~44W
- One panel for all power requirements

Application

Office, schools, airports, subways, hospitals, shopping malls, retail stores, etc.

Specification



- Accessories

UGR 22

Watt	Pri I _{max}	Sec I _{max}	3000K		4000K/5000K		1	2	3
44	280	200	5580lm	127lm/w	6070lm	138lm/w	ON	ON	ON
40	260	185	5160lm	129lm/w	5600lm	140lm/w	ON	ON	OFF
36	230	165	4700lm	131lm/w	5100lm	142lm/w	ON	OFF	ON
32	210	150	4270lm	133lm/w	4600lm	144lm/w	ON	OFF	OFF
28	180	135	3800lm	135lm/w	4100lm	146lm/w	OFF	ON	ON
24	160	115	3300lm	137lm/w	3550lm	148lm/w	OFF	ON	OFF
20	130	95	2780lm	139lm/w	3000lm	150lm/w	OFF	OFF	ON
16	100	75	2220lm	139lm/w	2400lm	150lm/w	OFF	OFF	OFF

UGR<19

Watt	Pri I _{max}	Sec I _{max}	3000K		4000K/5000K		1	2	3	UGR
40	280	200	4113lm	103lm/w	4474lm	112lm/w	ON	ON	ON	<22
36	260	185	3751lm	104lm/w	4071lm	114lm/w	ON	ON	OFF	<22
32	230	165	3445lm	108lm/w	3738lm	116lm/w	ON	OFF	ON	<19
28	210	150	2954lm	105lm/w	3182lm	117lm/w	ON	OFF	OFF	<19
24	180	135	2649lm	110lm/w	2858lm	118lm/w	OFF	ON	ON	<19
20	160	115	2208lm	110lm/w	2375lm	118lm/w	OFF	ON	OFF	<19
16	130	95	1748lm	109lm/w	1886lm	118lm/w	OFF	OFF	ON	<19
12	100	75	1312lm	109lm/w	1418lm	114lm/w	OFF	OFF	OFF	<19



NEW



SAA CE

60%
energy
saving50,000
hours life

NEW

Classroom Luminaire



Item	Symbol	L=120CM/4ft		L=150CM/5ft	
Rated Power	W	17W	32W	25W	50W
Product Code	/	EAS-B-1740	EAS-B-3240	EAS-B-2540	EAS-B-5040
LED Type/Qty	SMD2835	104	182	156	286
Lumen Efficacy	Lm/w	typ.115	typ.115	typ.115	typ.115
Luminous Flux	Frosted	typ.1950	typ.3650	typ.2850	typ.5750
Color Index	CRI(Ra)	Ra>80			
Color Temperature	TC(K)	Single color:WW:3000K, NW:4000K, PW:5000K Tri-color:3000/5000K, Mixed:4000K			
Beam Angle	Degree	120 degree			
Dimming Function	/	ON-OFF / 1-10V dimming / DALI dimming			
Flicker	/	Flicker free			
Power Factor	PF	PF>0.95			
Input Voltage	V	AC200~240V/50Hz			
Working Voltage	V	Constant DC36~42V			
Housing material	/	Steel Case + PC Cover			
Star rating	S	<0.5S			
Protection Class	IP	IP20			
Temperature	°C	Operation:-15°C~+50°C Storage:-25°C~+55°C			
Lumen Maintenance @6000hrs	%	80%			
Switch cycle before failure	mes	100000			
Life Span	h	50,000 hours			
Warranty	/	5 years			

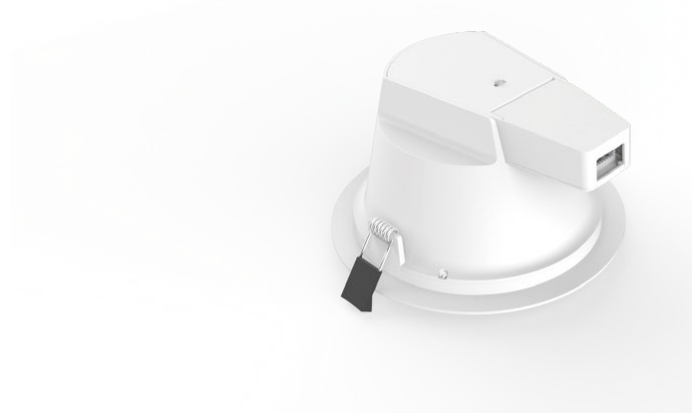




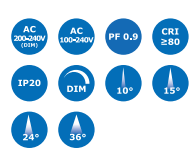
IP54 UGR<19 Downlights



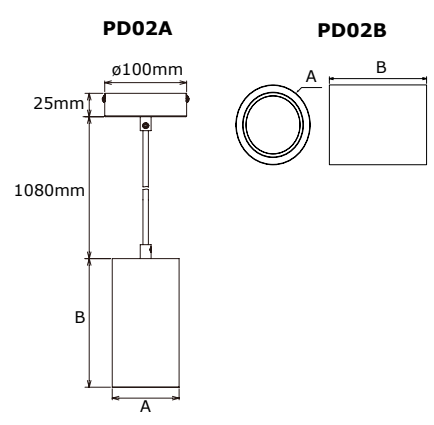
Size & Power & Lumen			Size (Inch)	Size (AxBm)	Cutout
3"	6W	560lm	3	ø110x70	ø90-95
4"	13W	1390lm	4	ø145x82	ø125-135
6"	18W	1780lm	6	ø172x95	ø150-165
8"	18W	2110lm	8	ø228x98	ø200-210
8"	25W	2880lm			



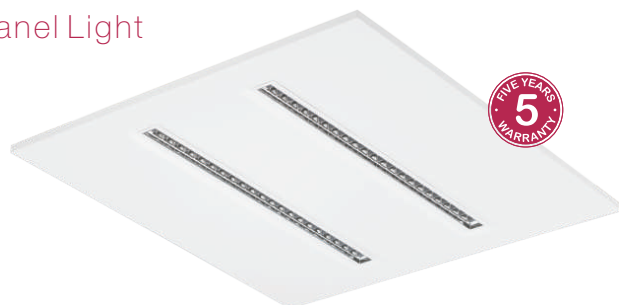
Pendant & Cylinder Downlights



Power & Lumen & Size		
		(AxBmm)
10W	900lm	ø80x130
18W	1660lm	ø80x160
25W	2765lm	ø112.5x160



EAS-UGR16 Panel Light



Lumen: 3200lm-3600lm



A New concept of LED Panels for office space. It is equipped with detachable and customisable LED louver modules.

The UGR16 Panel is available in standard sizes, and customised size into a linear system or with air-slot function based on project requirement. Complete accessories are available for all installation requirement such as recessed / pendant / surface mounted. UGR16 provides excellent light distribution with low glare of UGR 16. It is widely used in areas such as office, retail, schools, hospital etc. Thanks to the high efficacy of 133lm/W, it provides up to 60% energy saving compared to fluorescent T5.



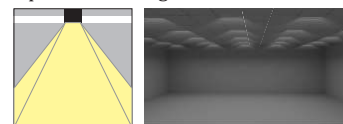
Application

Offices, Banks, Education/ Schools, Government, Healthcare, Hospitality, Retail stores, Supermarkets, Factories, Laboratory, Workshop etc.

Features & Benefits

- UGR 16
- TP(a)
- DALI, 1-10V or non-dim power control
- Wide and uniform light distribution
- Up to 130lm/W
- Modular Design
- Ultraviolet (UV) + Infrared (IR) free light
- Customizable

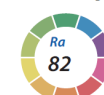
Optics Beam Angle: 70°x85°,85°x85°



Correlated Colour Temperature:



Color Rendering Index:



Accessory:



EAS-UGR19 Downlight



Lumen: 1000lm/2000lm



A New concept of LED recessed downlight with UGR<19 to replace the compact fluorescent downlight.

The UGR Downlight is designed as a modular system and positioned as a compact fluorescent downlight replacement. High flexibility to be changed between 150mm and 200mm cut-out with same light engine. The special reflector creates a double asymmetric distribution with 25° shielding angle, it provides excellent lighting with very low glare. The UGR Downlight provides the perfect combination of efficiency, light comfort and design, without compromising lighting performance (color rendering and color uniformity).



Application

Residential Buildings, Retail, Automotive and Parking, Education, Government, Healthcare, Hospitality, Offices and Banks,, Commercial Purposes, etc.

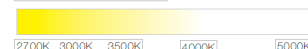
Features & Benefits

- UGR19
- TP(a)
- Designed with flexibility in mind
- Punching pure aluminum heat-sink
- Wide and uniform light distribution
- Up to 100lm/W
- IP20
- (UV) + (IR) free light
- Passive cooling system

Optics Beam Angle: 85°



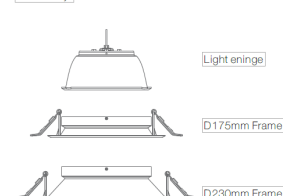
Correlated Color Temperature:



Color Rendering Index:



Accessory:

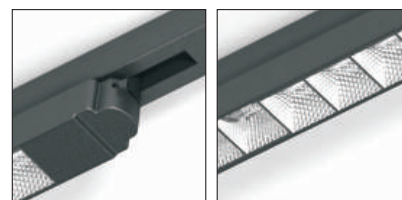
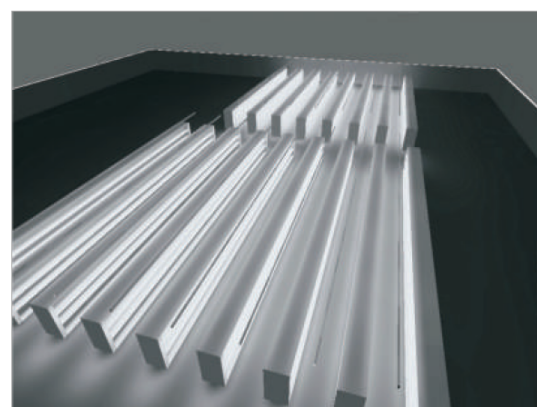
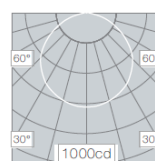
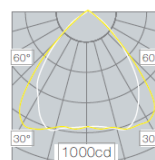
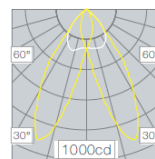
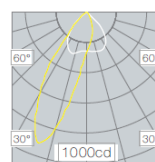


EAS-TLL Linear Track Light



A track light with a unique linear fixture design: fixture fits onto traditional lighting track with 4 different lighting distribution curves. Narrow, Wide, Asymmetric and Double Asymmetric

The TLL is a combination of technology and aesthetics, it fits seamlessly onto the lighting track, it is ideal for retail lighting applications where a wide even distribution of light is desired in either shelves or floor. The luminaire can be used to wash a wall with very uniform light. Utilising LED technology, it is extremely energy efficient and has precise light distribution.



EAS-TLR Recessed Wallwash



The Recessed Wall wash Light ensures optimal uniformity from an asymmetrical light distribution that is designed to reduce necessary mounting fixture volume compared to fluorescent wall washers.

The Recessed Wall wash Light is designed for vertical lighting with asymmetric light distribution (60°x90°), it provides a rectangular, wide and uniform wall washer lighting effect for shelves and racks in commercial environment. Recessed and track mounted installations are available, 180° adjustable, makes it easy to be installed and suitable for different applications. Nearly 50% energy saving compared to ceramic metal halide thanks to the high efficacy. It offers high quality lighting for high-end application utilising low glare light with 25° shielding angle.



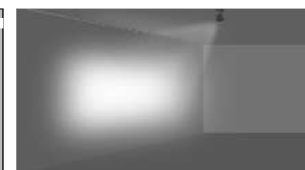
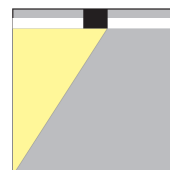
Application

Residential, Retail, Art-gallery, Museum, Automotive and Parking, Education, Government, Healthcare, Hospitality, Offices and Banks, etc.

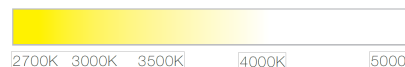
Features & Benefits

- TP(a)
- extruded pure aluminum housing
- precise light distribution
- Macadam 3 SDCM
- Up to 100lm/W
- Ultraviolet (UV) + Infrared (IR) free
- Passive cooling system without fans

Optics Beam Angle:
90°x60°



Correlated Color Temperature:



Color Rendering Index:



Side Lit LED Panel

Features



• ENEC



- TUV, CE, CB, SAA, ENEC and RoHs certificated.
- IP 20,44,54, IP 66, Fire-proof, Air-purifying available.
- Tridonic driver and Samsung LEDs are our standard choice.
- Bespoke structure
- LED protection design, avoids damage during transportation.
- Aluminum backplate heat-sink feature to prolong the lifespan of the LEDs.
- UGR 19
- Batch code is printed on every PCB board
- Unique design to achieve multiple installations (suspending, recessed, surface mounted).
- Screw less structure for even pressure of LGP.

Application

Office, schools, airports, subways, hospitals, shopping malls, retail stores, etc.

Specification

Item No.	Dimension (mm)	Wattage (W)	LED Qty (pcs)	Lumen (lm)	Input Vol. (V)	UGR
P66-36	595*595*12	36	192	4500	200-240	<19
P66-48	595*595*12	44-48	192	5500-6000	200-240	<19
P66-96	595*595*12	96	384	10000	200-240	<19
PI23-36	295*1195*12	36	192	4500	200-240	<19
PI23-48	295*1195*12	44-48	192	5500-6000	200-240	<19
P66-20	595*595*12	20	192	2000	200-240	<19
P66-24	595*595*12	24	192	3000	200-240	<19
PI26-72	595*1195*12	72	384	8200	200-240	<19

• Accessories



Waterproof

IP66, Water spraying resistant, Rubber pad, invisible & close, excellent protection & no any influence on appearance



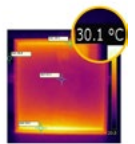
◎ Purifying Air

TiO2 covering diffuser can kill germs, viruses & purify air.

Fire rated - TP(a)

LED panel light fire rated series are widely used for general indoor areas, providing energy savings of up to 70%. With its excellent design, Fire Rated LED panel is suitable for both recessed & suspended applications to cater all applications and requirements.

◎ Better Heat Dissipation



◎ Fire Resistant

Diffuser made by V2 grade material, fire resistant. V1, V0 diffuser optional.

UP & DOWN LED PANEL LIGHT



Up & Down LED Panel

Features

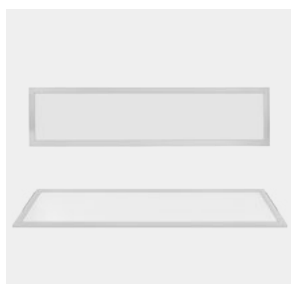
- TUV, CE, CB, SAA and RoHs certificated.
- 30% uplight,70% downlight.
- UGR<19,
- Bluetooth mesh intelligent control.
- Linear suspension.

Application

Offices, Schools, Retail stores, Meeting rooms, Healthcare, Hospitals, Corridors, etc.

Specification

Item No.	Dimension(mm)	Wattage(W)	LED Qty (pcs)	LED	CRI	InputVol.	Lumen(lm)
PSI23-UD	1195*295*12	36W	192	2835	>80	200-240	4200lm





• Connector Accessories



LED Linear Light



Features

- Simple planning and free configuration of lighting solutions with "L", "T" and "+" node connectors.
- Customized colors and lengths available.
- Cost-effective solution with replaceable linear LED module as light source.
- High lumen output, 120lm/w, uniform and soft light.
- 1-10V, DALI dimming, emergency available.
- Can be recessed, suspended and surface mounted, even mounted with a track.



• LL5083T



• LL5083



Application

Widely used in office, meeting room, shopping mall, school, etc.

Specification

Item No.	Length	Power	LED Type	Efficiency	CCT	CRI	Function
LL	1000mm	20W	SMD2835	120lm/w	3000K/4000K/6000K	>80Ra	Non-dimming, 1-10V dimming, DALI dimming, Emergency
LL-T	1000mm	20W	SMD2835	120lm/w	3000K/4000K/6000K	>80Ra	Non-dimming, 1-10V dimming, DALI dimming, Emergency

EASi UK

20-22 Wenlock Road
London, N1 7GU
United Kingdom

T +44 (0) 870 850 7669
F +44 (0) 870 836 2478
E info@easiled.com

www.easiled.com

EASi Ireland

Unit 18, Doorra Business Park
Quin Road, Ennis, Co Clare
Ireland

T +353 (0)65 684 1722
F +353 (0)65 684 1808
E info@easiled.com

www.easiled.com