



Industrial Lighting

ARD-T13B Linear High Bay

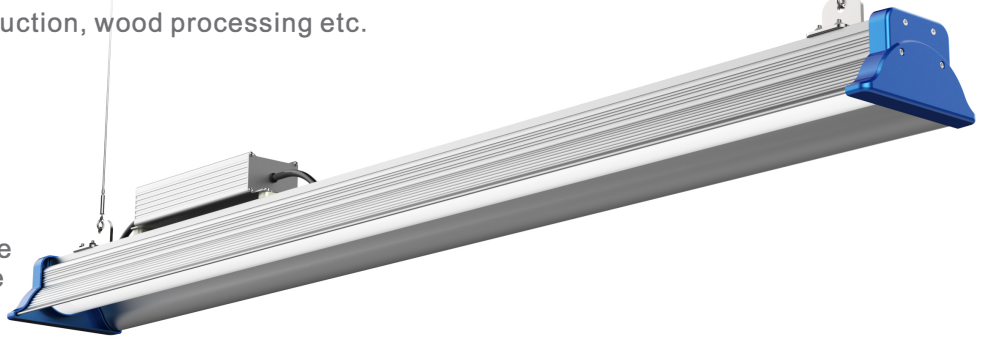


Features

- Highly energy efficient - up to 145 lm/w
- High Luminous flux - up to 28000 lm
- Perfectly suitable for industrial use due to IP65
- High grade materials and perfect workmanship provide excellent cooling abilities
- D-Mark tested for use in paper production, wood processing etc.
- 5 Years warranty

Options

- Optional Meanwell driver available
- CRI 90 Ra available upon request
- 1-10V dimmable and DALI available
- Microwave motion sensor available
- Optional emergency power supply
- Zigbee is available



100W/150W/200W

ARD-FT12 Food Production High Bay



Features

- Extremely energy efficient - up to real 150 lm/w
- Excellent heat dissipation performance
- High colour fidelity through CRI 80Ra
- Perfectly suitable for industrial use due to IP65
- D-Mark tested for use in paper production, wood processing etc.
- 5 Years warranty

Options

- Optional Meanwell driver available
- CRI 90 Ra available upon request
- 1-10V dimmable and DALI available
- Microwave motion sensor available
- Optional emergency power supply
- Zigbee is available
- Anti-dust edition for an ever-clean working environment



60W/80W/100W/120W/150W/180W/200W/240W

ARD-FTSB-F Round High Bay - Food Production

Features

- Highly energy efficient - up to 140 lm/w
- High Luminous flux - up to 28,000 lm
- Perfectly suitable for Food Production Environment use
- High grade materials and perfect workmanship provide excellent cooling capabilities
- No exposed hardware to conform with FDA regulations.
- Unique Thermal management structure

Options

- Optional Meanwell driver available
- CRI 90 Ra available upon request
- 1-10V dimmable and DALI available
- Microwave motion sensor available
- Optional emergency power supply
- Zigbee is available



100W/150W/200W



ARD-FTSB Round High Bay

Features

- Highly energy efficient -> up to 160 lm/w
- High Luminous flux -> up to 46500 lm
- Perfectly suitable for industrial use due to IP65
- Space between driver housing and lamp body to prevent heat accumulation
- D-Mark tested for use in paper production, wood processing etc.
- Beam angles available 30°, 60°, 90°, 110°

Options

- Optional Meanwell driver available
- 1-10V dimmable and DALI available
- Philips and Nichia chips available (standard is Philips)
- Different covers available: clear glass, clear PC and PMMA lens
- Additional reflector is available
- Microwave motion sensor available
- Mounting bracket for ceiling or wall installation available
- Zigbee is available

80W/100W/120W/180W/200W/240W



ARD-FTSB-HT Round High Temp High Bay

Features

- Highly energy efficient - up to 135 lm/w
- High Luminous flux - up to 27000 lm
- Perfectly suitable for industrial use due to IP65 and ambient temperatures up to 72°C
- High grade materials and perfect workmanship provide excellent cooling abilities
- D-Mark tested for use in paper production, wood processing
- Extremely heat resistant driver technology



Options

- Optional Meanwell driver available
- CRI 90 Ra available upon request
- 1-10V dimmable and DALI available
- Microwave motion sensor available
- Optional emergency power supply
- Zigbee is available



100W/150W/200W

ARD-FTSB-H Round High Bay-High Lumen

Features

- Highly energy efficient -> up to 180 lm/w
- High Luminous flux -> up to 36000 lm
- Perfectly suitable for industrial use due to IP65
- Space between driver housing and lamp body to prevent heat accumulation
- 100W, 150W, 200W Models available
- 60°, 90°, 110° lenses



Options

- Optional Meanwell driver available
- 1-10V dimmable and DALI available
- Philips and Nichia chips available (standard is Philips)
- Different covers available: clear glass, clear PC and PMMA
- Additional reflector is available
- Microwave motion sensor available
- Mounting bracket for ceiling or wall installation
- Zigbee is available



100W/150W/200W



www.easiled.com

ARD-FT31B Racking High Bay

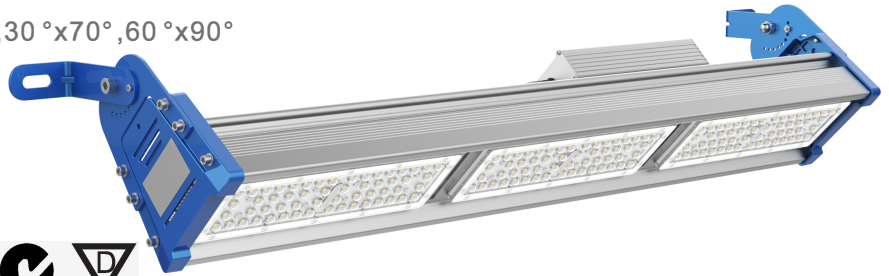


Features

- Highly energy efficient - up to 130 lm/w
- High Luminous flux - up to 78000 lm
- Available up to 600W
- Installation heights up to 30 meters!
- D-Mark tested for use in paper production, wood processing etc.
- 5 Years warranty

Options

- Various beam angle options: 30°, 60°, 90°, 30°x70°, 60°x90°
- Optional Mean well driver available
- 1-1 0V dimmable and DALI available
- Microwave motion sensor available
- Optional emergency power supply
- Zig bee is available



100W/120W/150W/180W/200W/240W/300W/400W/600W

EAS-FT36 High Mast & Flood light



Features

- Highly energy efficient - up to 130 lm/w
- High Luminous flux - up to 130000 lm
- IP67 for indoor and outdoor use under all conditions
- Available up to 1000W
- D-Mark tested for use in paper production, wood processing etc.
- 5 Years warranty

Options

- Various beam angle options: 30°, 60°, 60°x90°, 90°x120°
- Optional Meanwell driver available
- 1-1 0V dimmable and DALI up to the 240W model available
- Microwave motion sensor up to the 240W model available
- Zig bee is up to the 240W model available



120W/180W/240W/300W/500W/1000W



www.easiled.com

IP67 Harsh Environment Application

Features

- Highly energy efficient - up to 130 lm/w
- High Luminous flux - up to 7800 lm
- Available up to 60W
- Installation heights up to 6 meters!
- IK10 impact resistant
- 5 Years warranty

Options

- Wide Beam Angle 120°
- Internal Driver
- Microwave motion sensor available



42W, 50W, 60W

IP69 Harsh Environment Application

Features

- Highly energy efficient - up to 110 lm/w
- High Luminous flux - up to 8800 lm
- Available in 40W, 60W & 80W
- Installation heights up to 6 meters!
- IK10, IP69K Ready for High Temperature and High Pressure Wash-down
- Resistance to Chemical Agents: Ammonia 5%, Carbonic Acid, Food Oils, Fats;
- 5 Years warranty

Options

- 1-10V dimmable and DALI available
- Philips and Nichia chips available (standard is Philips)
- Microwave motion sensor available
- Mounting bracket for ceiling or wall installation
- Zigbee is available



EAS-CL - IP54 Ceiling Light

AC
100-240V

AC
200-240V

PF
≥0.9

CRI
≥80

DIM

IP⁵⁴

120°

IK08



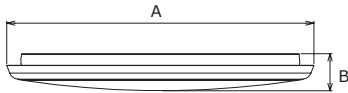
► | Size & Power & Lumen & Size

(Inch)		(AxBmm)	
8"	12W	1260lm	ø200x48
10"	12W	1068lm	ø250x48
12"	18W	1910lm	ø300x40
	25W	2180lm	
14"	25W	2575lm	ø350x40
16"	30W	3090lm	ø400x52



► | CCT

3000K | 4000K | 5000K | 5700K



EAS-CL - IP65 Ceiling Light

AC
100-240V

AC
200-240V

PF
≥0.9

CRI
≥80

DIM

IP⁶⁵

120°

IK10



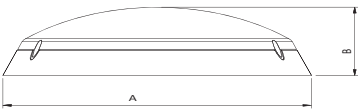
► | Size & Power & Lumen & Size

(Inch)		(AxBmm)	
12"	12W	1260lm	ø290x94
	18W	1890lm	ø290x94
	22W	2310lm	



► | CCT

3000K | 4000K | 5000K | 5700K



A	B
290mm	94mm



EASi UK

20-22 Wenlock Road
London, N1 7GU
United Kingdom

T +44 (0) 870 850 7669
F +44 (0) 870 836 2478
E info@easiled.com

www.easiled.com

EASi Ireland

Unit 18, Doorra Business Park
Quin Road, Ennis, Co Clare
Ireland

T +353 (0)65 684 1722
F +353 (0)65 684 1808
E info@easiled.com

www.easiled.com